



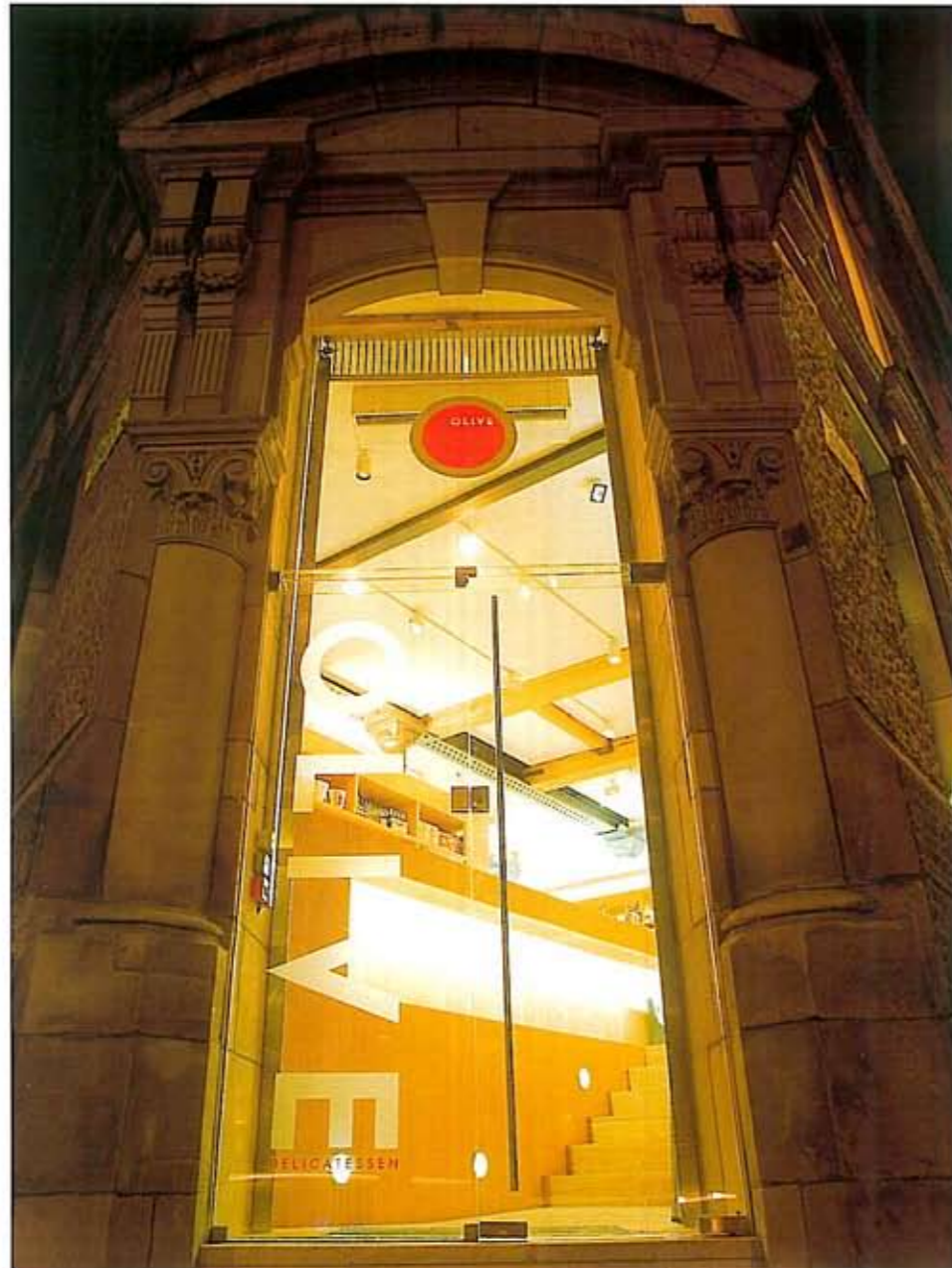
arc

mondo

architectural / retail / corporate • supplement 3 • 2000

Focus Lighting
Iwataya Passage
Metreon
Tate Modern

olive



Situated in the heart of Manchester, Regency House, owned by Artizan Holdings, is a grade II listed building built of red brick and sandstone with an expressed steel, timber and masonry structure evoking Manchester's industrial heritage. The rich sandstone monolith on the lower half of the building provides an enormous weight, imparting a street presence

and architectural monumentality which enforces and amplifies its great civic significance. Originally built as a storage warehouse for the textile industry during the industrial revolution, the building has since changed usage several times and has suffered from this as a result. Today, Regency House accommodates Olive Delicatessen and a number of bars/restaurants on the ground floor,

a health club in the basement and loft apartments within the five floors above ground level. The new uses activated by the gradual economic and population growth in the inner city has brought new life to the surrounding area and a once tired redundant building. Concentrating on Olive, architect Andrew Wallace has created a space which is a tangible repre-

sentation of urban renewal, juxtaposing the weight and strength of the original industrial architecture with a contemporary lightness. Key to Wallace's concept has been his use of light; both natural and artificial. When designing Olive, Wallace modelled the deli's interior in AutoCAD and was then able to utilise *Lightscape 3.1 radiosity software in conjunction with Erco's

product download service offered on the company's website at www.erco.com to mimic the actual effects of each lighting fixture, thus enabling almost complete accuracy from drawings to completed project. The lighting scheme at Olive was provided by Celcius who, working to Andrew Wallace's specifications, supplied a range of Erco fix-

tures to provide a simple, yet effective, solution through the provision of fittings housed with concealed tracks and located within the new imposed ceiling layer between the steel posts and timber beams. Luminance of 300 Lux is provided within the main retail area, the exception being the toilet areas which are at 150 Lux. Secondary lighting is provided through the



use of fluorescent lamps hidden out of sight at low and high levels behind the timber shelving glass frieze, timber bar counter, and glass interface between the office area and ceiling.

The sandblasted glass frieze, which follows the full length of the stainless steel preparation unit, was originally inspired by the soft light of the Japanese Shoji screen and it is the intention that the scale,

length and intensity of brightness that results will be more tangible than the elements that surround it. In reality the effect provides a focal point to the source of the new imposed dynamic and offers the provision of adequate light and an active plane to display the coffee menu and the graphic of the shop logo.

The use of both artificial and natural light was seen as a central

concern to Andrew Wallace's concept for the project. The soft nuance of light from the Whitworth Street elevation was created through the use of etching film, and with the bright diffused light, achieved through sandblasting, providing sharp as well as blurry qualities. These different uses of glass and the light qualities they provide are becoming something of a hallmark for the designers.

Similar views of Olive. (above) The finished project. (below) One of the AutoCAD/Lightscape 3.1 renders



* The use of the Lightscape 3.1 software was as part of a Ph.D. thesis at Manchester University, and as such no payment was made.

erco lighting spec

27 x QT32 150W Floodlights, 12 x Recessed Singlet, 3m Recessed Track, 5 x Flanged Live End, 5 x End Plate, 4 x Flush Coupler, 3 x 5W TC Wall Mounted Fitting, 6 x QT12 50W 12V Narrow Beam Downlights, 3 x 100VA Transformers, 8 x QT-DE12, 2 x Surface Singlet, 4 x TM 100W PAR30 Spotlights, 1 x HIT-DE 150W Gobo Projector, 1 x Mercury Glass Gobo.

